

WHAT should I look for in an Adult Family Home?

- ❑ *Is the license current and the facility available for your tour?*
- ❑ *Are the grounds safe and the house well kept?*
- ❑ *Is the home fresh smelling? What foods and snacks are served?*
- ❑ *Do the other residents look clean and well cared for? Are they smiling?*
- ❑ *Is there safety equipment (grab bars, handrails, wheelchair ramps, etc)?*
- ❑ *How are medications handled?*
- ❑ *What will happen as the resident's needs increase?*
- ❑ *What is the background and qualifications of the caregivers?*
- ❑ *Ask about cost, policies, and visitation hours;*
- ❑ *In addition you may want to ask for references.*



Dorothy & Thomas Schlimme
Owners

- ✓ **Thomas** is trained healthcare caregiver professional and Nursing Assistant Registered
- ✓ Volunteered with the city of Clinton, Minnesota taking care of homes for the elderly
- ✓ **Dorothy** is a graduate of Swiss Hotel Management College specializing in Nutrition and Management
- ✓ Served as a Chapter president of AFH Association and also on the Washington State Ombudsman Advisory council
- ✓ Over 10 years of work experience in nursing homes and adult family homes
- ✓ Nursing Assistant Certified by the State of Washington and received specialty training in Dementia and Mental Health

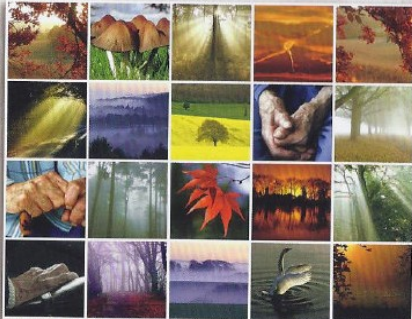
For more information please contact:

PROVIDER	DOROTHY SCHLIMME
TITLE	AFH Provider / Owner
E-MAIL	dorothysangelhavenafh@comcast.net
WEBSITE	www.dorothysangelhavenafh.com
HOME 1	253.833.8271
HOME 2	253.833.2513
CELL	206.841.1866
FAX	253.939.4995

Dorothy's Angel Haven
Adult Family Homes
and Hospice, LLC



Special HOMES for Special People



Home 1: **253-833-8271**

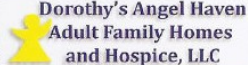
Home 2: **253-833-2513**

Dorothy's cell: **206-841-1866**



Caring for aging parent or relative will impact almost everyone in America. Many times, we are unprepared and

when living at home is no longer an option, choosing one of our homes may be your best choice.



Dorothy's Angel Haven Adult Family Homes and Hospice, LLC

provide an **alternative to long-term institutional, high cost facilities** by

offering warm, loving, and personalized care in a family setting in a residential area in your community at a reasonable cost.

We are **committed to setting the standards in the care industry** and offer safe, comfortable, quality, non-institutional care for people in need of assistance with daily living.

Our homes are **licensed by the Department of Social and Health Services of Washington State** to provide care for elderly, long term and terminal care. Our staff is carefully screened, background check and references are checked, and each employee must meet minimum state requirements.



Dorothy's Angel Haven Adult Family Homes and Hospice, LLC



WE OFFER FOLLOWING AMENITIES and SERVICES:

- ▶ *Private or semi-private rooms with phone/TV outlets;*
- ▶ *Assistance with activities of daily living and personal care needs;*
- ▶ *Homemade nutritious meals (accommodating special diets);*
- ▶ *Daily laundry and housekeeping;*
- ▶ *Medication supervision, assistance and re-ordering;*
- ▶ *Transportation to medical appointments;*
- ▶ *Case management with oversight nurse;*
- ▶ *Holiday and birthday celebrations;*
- ▶ *Help with ordering medical supplies;*
- ▶ *Spacious parking for visitors, etc.*



Dorothy's Angel Haven Adult Family Homes and Hospice, LLC



We understand the issues of confronting your loved one during these difficult decision making times. Coping with an injury, surgery, or an illness can create incomparable stress and anxiety.

In Dorothy's Homes, **we want to help** to achieve your goal of finding the best and most comprehensive program and care plan suitable to the needs of your loved one.

We look forward in assisting you with planning the most appropriate care to meet your needs. Bring your family and learn how we provide top quality care.

Home 1: **253-833-8271**

Home 2: **253-833-2513**

Dorothy's cell: **206-841-1866**